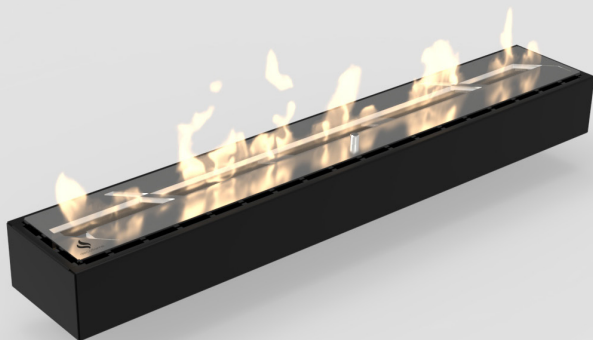


BUILT-IN BURNER WITHOUT LIP™

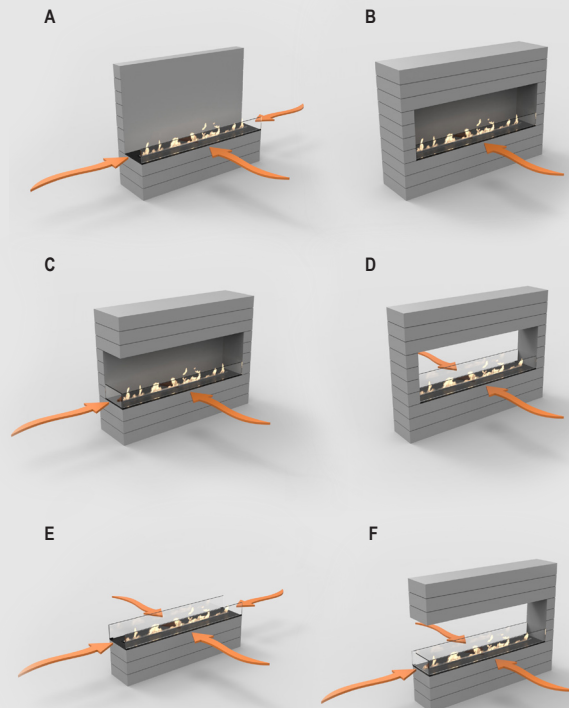


The decoflame® Built-in Manual Burner with Lip™ is part of the built-in models.

Its simple design makes it versatile and adaptable for a large variety of fireplace applications. The burner's length can be 400 - 500 - 600 - 700 - 800 - 900mm.

FEATURES

- DecoFlame® brushed stainless steel manual burner
- Safety chamber
- Adjustable flame height
- No chimney required
- Safety chamber
- Shutter tool
- 3M Sponge
- Optional hardened, diamond clear glass



DecoFlame highly recommends ordering and installing one or several glass screens in order to protect the flame from draught, while keeping it vivid.

The glass screen is available on request.

It can be mounted onto the surface in which the bio fireplace is installed. Built-in burner without lip **can not** be ordered with mounted glass on the burner.

Model A-B One low glass.

Model C, E, F Low glass. We recommend it as illustrated for the best result regarding design and operation.

Model D Two low glass or one full glass and one low glass.

TECHNICAL INFORMATION

	400mm	500mm	600mm	700mm	800mm	900mm
Capacity / Liter	1.9	2.4	2.9	3.4½	3.9	4.4
Fuel consumption l/h	0.27	0.34	0.41	0.48	0.56	0.62
Burning time / Hours	> 7 hours	> 7 hours	> 7 hours	> 7 hours	> 7 hours	> 7 hours
Heat output max: kWh	2.6 - 1.6	3.4 - 2.0	4.0 - 2.4	4.8 - 2.7	5.4 - 3.2	6.1 - 3.6
Net weight: kg	5.1	6.3	7.5	8.5	9.6	10.8
Minimum room size: m³	32	40	48	56	64	72

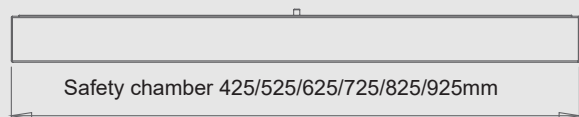
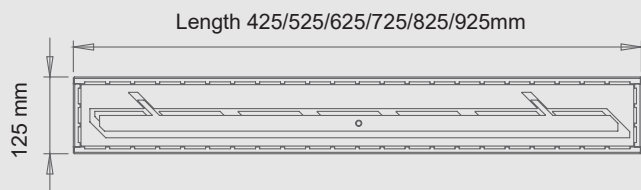
BIOETHANOL

For use and information about bioethanol, please visit our website decoflame.com.

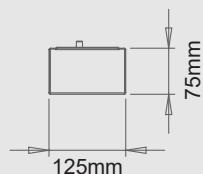
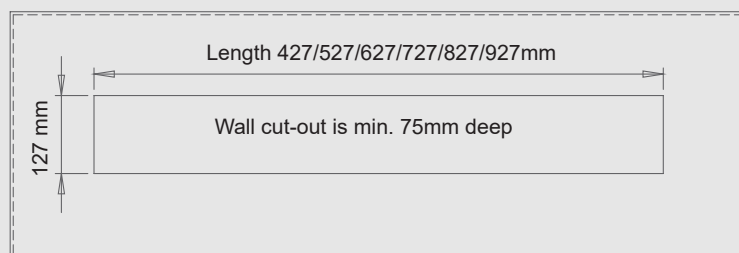
(Please be aware that bioethanol is essential to a proper use and guarantee of your product).

DIMENSIONS:

BUILT-IN BURNER



WALL CUT-OUT



It is imperative to follow the indications in the User manual, concerning the installation of decorative or electronic items above the fireplace.

